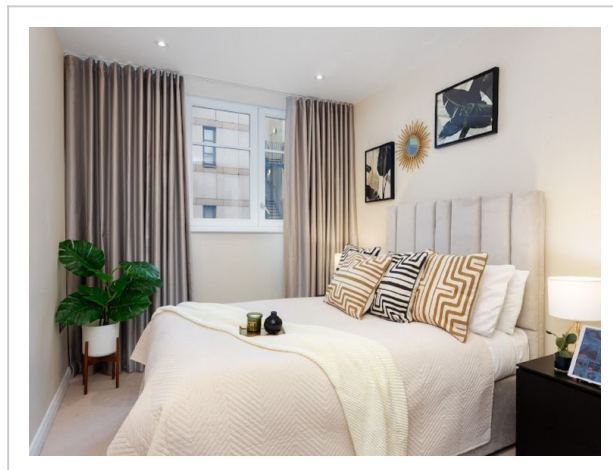
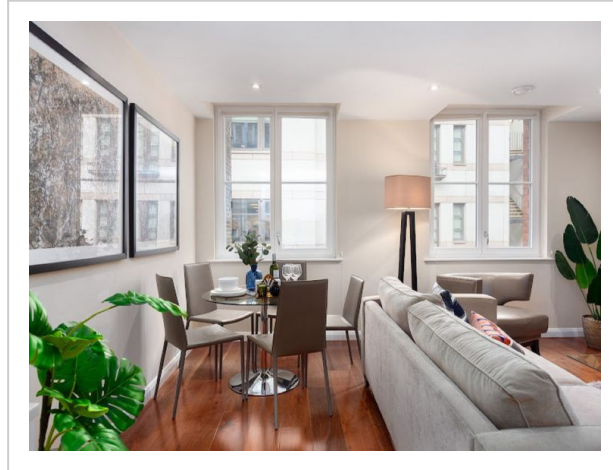


## Chancery Lane, Central London, London City, Greater London, United Kingdom, EC4A 1DT



**Address: London City, Greater London, United Kingdom, EC4A 1DT**

Bedrooms: 1 Bathrooms: 1

### Outside

Modern apartment block "Chancery Lane, Central London". In the centre of London, in a central position. In the complex: WiFi, lift, central heating system, laundry (extra). Room cleaning weekly (included). Breakfast on request (extra). Grocery, bar 100 m, bus stop "Chancery Lane" 330 m, railway station "Farringdon" 1 km, underground station "Chancery Lane" 700 m. Nearby attractions: Barbican Cultural Centre 3 km, St. Paul's Cathedral / Tate Modern 1 km, Buckingham Palace 4 km, Piccadilly Circus 3 km, Tower of London & London Bridge 5 km, London Eye 4 km. Please note: reception open 09:00-17:00 hrs. Suitable for families, baby equipment on request (extra). Please

note: the photograph shows a typical example.

## Inside

"Chancery Lane, Central London", 2-room apartment 40 m2. Modern and stylish furnishings: open living/dining room with dining table and TV (flat screen). 1 double bedroom with 1 double bed and bath/shower/WC. Open kitchen (4 hot plates, oven, dishwasher, toaster, kettle, freezer, combination microwave). Heating. Facilities: washing machine, dryer, baby cot for up to 2 year olds (extra), hair dryer. Internet (WiFi, free). Please note: suitable for families. Non-smoking house. TV only EN. Smoke alarm, fire extinguisher.

---

### Amenities:

- |                         |                    |
|-------------------------|--------------------|
| • Extrabeds             | • Nightlife Winter |
| • Bath And Shower       | • Fridge           |
| • Breakfast             | • Hair dryer       |
| • Central               | • Heating          |
| • Cleaning              | • Interior Modern  |
| • Dishwasher            | • Internet         |
| • Tumbler               | • Kettle           |
| • Elevator              | • Open Kitchen     |
| • Metropolis            | • Freezer          |
| • Oven                  | • Nonsmoking       |
| • Familyfriendly Summer | • TV               |
| • Shower                | • Smoke Alarm      |
| • Nightlife Summer      | • Stove            |
| • Modern                | • Toaster          |
| • Washingmachine        | • Wlan             |
| • Familyfriendly Winter |                    |
-